

# PRODUCT SPECIFICATION SHEET

MODEL:  
**120R-7-Z300-156**

REV:  
**A**

DESCRIPTION:  
**Panel Mtg. Thermocouple Temperature Controller**

CUSTOMER PN:  
**Generic**

DWG. DATE:  
**10/20/05**

REV. DATE:  
**2/20/14**

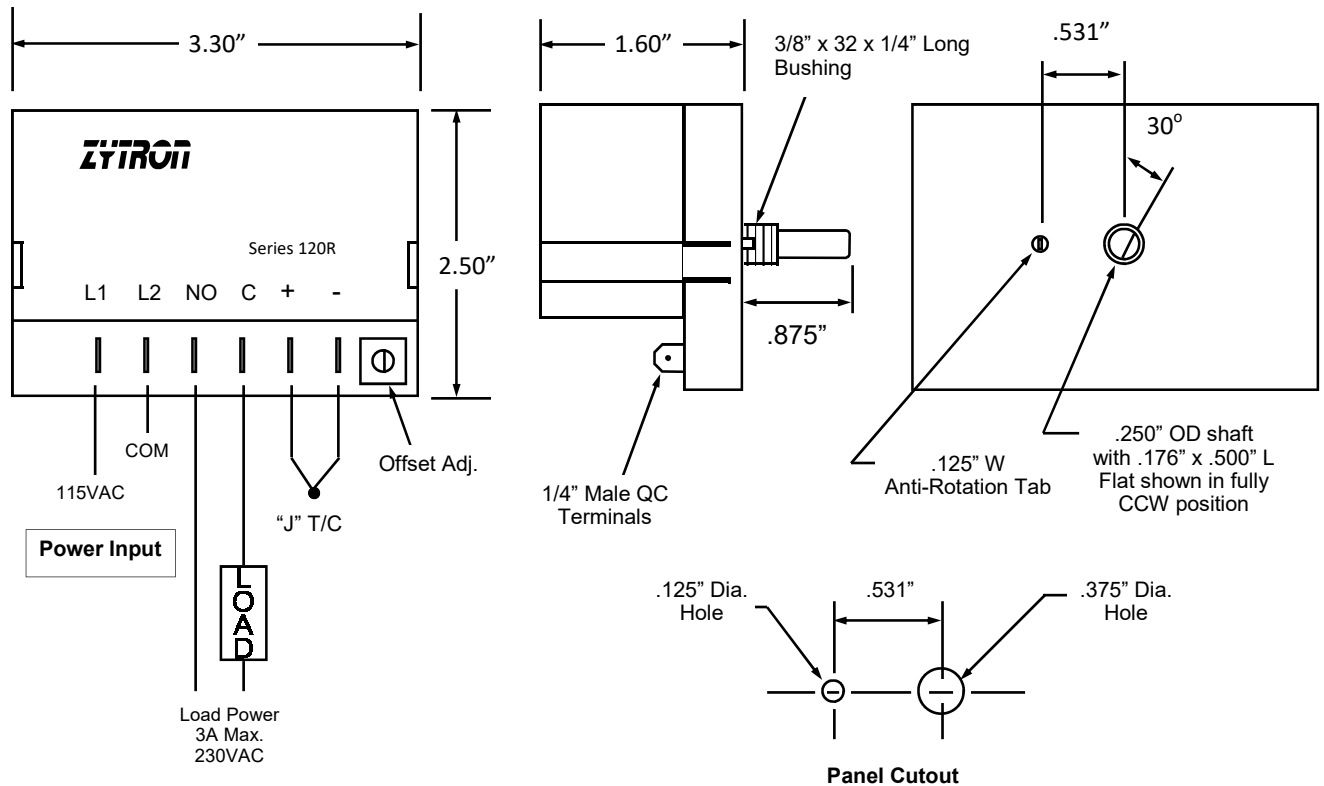
**Power Input:** 115VAC  $\pm$ 10%, 50/60Hz, 3VA Max.  
**Control Output:** SPST Relay rated 3(1.5) Amps Res. & 1.5(.8) Amps Pilot Duty 120(240)VAC  
**Control Mode:** On-Off with 3 to 4°F Hysteresis typ.  
**Setpoint Range:** 0 to 500°F  
**Sensor:** Type "J" Thermocouple  
**TC Break Protection:** Output de-energizes with TC break  
**Compensation:** Automatic cold junction compensation  
**Amb. Oper. Temp:** 0 to 70°C (32 to 158°F)

**MECHANICAL**

Enclosure Material: Noryl, Black color, UL temperature rating 105°C minimum  
 Field Terminations: 1/4" Male QC terminals, 6 places

**Agency Approvals:** UL/CUL Component Recognized E105669; RoHS compliant.

**DIMENSIONS:**



120R-7-Z300-156